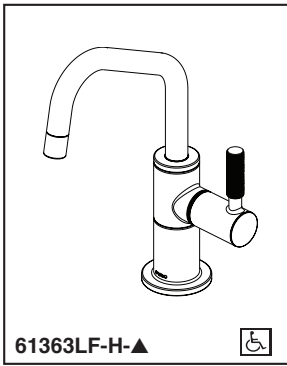


# BRIZO®

## HOT WATER DISPENSERS

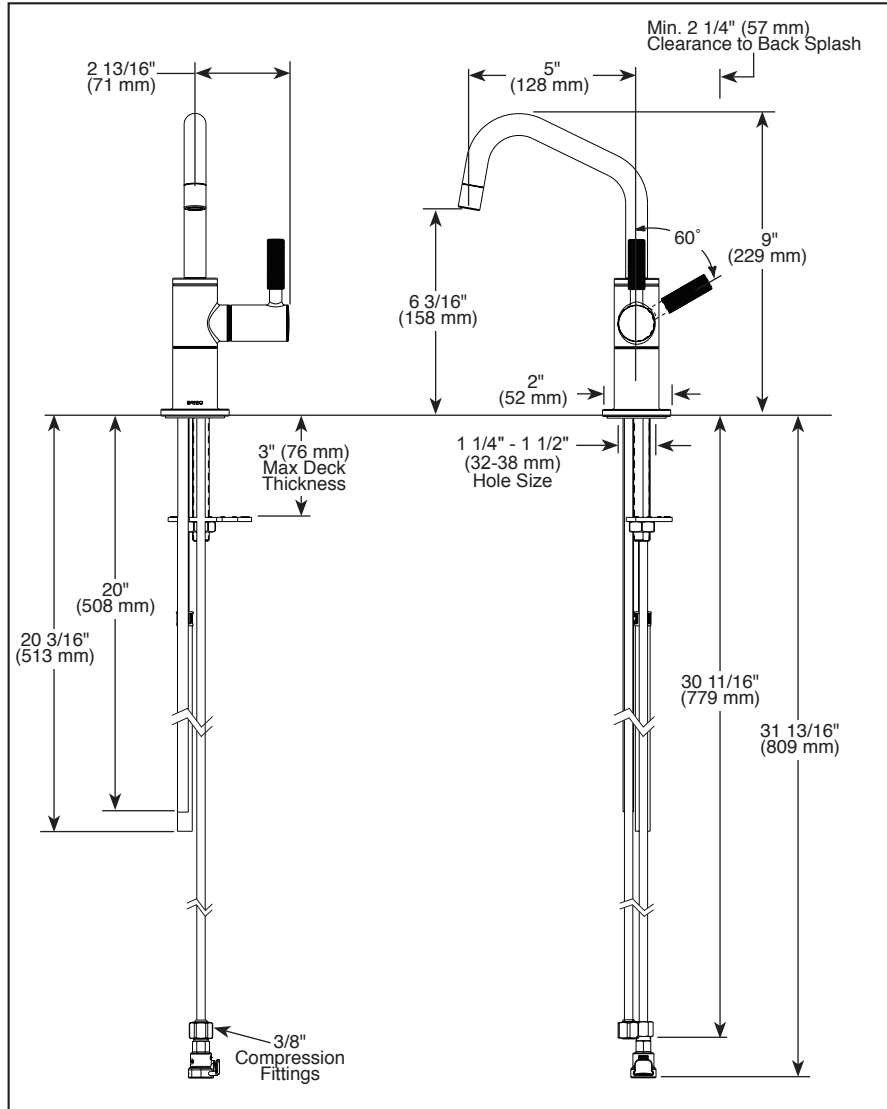


61363LF-H-▲



Submitted Model No.: \_\_\_\_\_

Specific Features: \_\_\_\_\_



▲ Designate proper finish suffix

- Single Handle Deck Mount
- 1 Hole Sink Applications
- Integrated Supply Tubes
- Compatible exclusively with InSinkErator® hot water tanks
- Engineered to function with HWT300-F2000S or HWT-300 InSinkErator® tank models
- Tank and filter not available from Brizo

### STANDARD SPECIFICATIONS:

- Laminar water stream with max flow rate 1.0 gpm @ 60 psi, 3.8 L/min @ 414 kPa
- Solid brass construction
- Spout swings 360°
- Self closing handle
- Spring Loaded ceramic disc valve cartridge
- Insulated body and spout to reduce heat transfer to faucet
- Mounting wrench to assist in tightening mounting nut securely
- Integrated supply tube with 3/8" compression fitting

### WARRANTY

- Parts and Finish 5 year limited warranty; or for commercial purchasers, 2 years for multi-family residential (apartments and condominiums). Warranty does not cover any other commercial uses.
- Warranty only applies to parts and finish of the faucet and to connection tubes. See InSinkErator® Tank and Filtration Manual for the warranty applicable to instant hot water tank and filtration system.

### COMPLIES WITH:

- ASME A112.18.1 / CSA B125.1
- ASME A112.18.6
- Indicates compliance to ICC/ANSI A117.1
- Verified compliant with .25% weighted average Pb content regulations.

Brizo Kitchen & Bath Company reserves the right (1) to make changes in specifications and materials, and (2) to change or discontinue models, both without notice or obligation. Dimensions are for reference only. See current full-line price book or [www.brizo.com](http://www.brizo.com) for finish options and product availability.

BSP-K-61363LF-H Rev. B

**Brizo Kitchen & Bath Company**  
 55 E. 111th Street, Indianapolis, IN 46280  
 350 South Edgeware Road, St. Thomas, ON N5P 4L1  
 © 2020 Brizo Kitchen & Bath Company