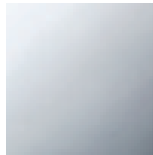




Kitchen - Tara Ultra
POT FILLER Cold water valve - polished chrome
Article number: 30 805 875-00



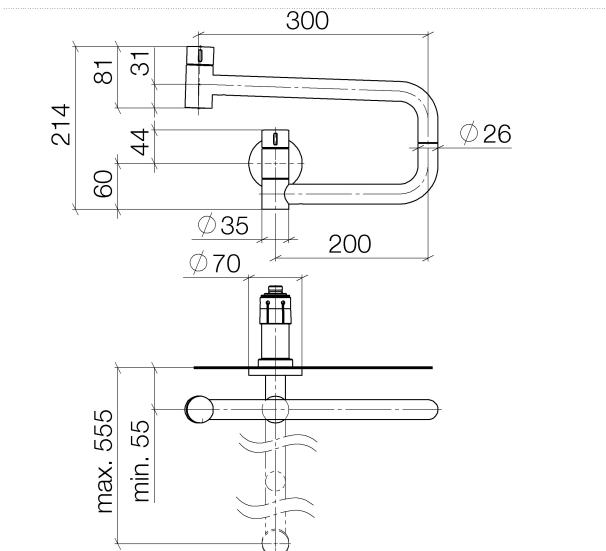
- 19-5/8" Projection
- Swiveling spout
- Laminar stream
- One water inlet, no mixing function
- Water flow rate limited to max. 1.5 gpm
- Two valves for on / off function
- lead-free
- Fittings group in compliance with DIN 4109: 1



polished chrome

Accessory is required for this item.

Dimensional drawing

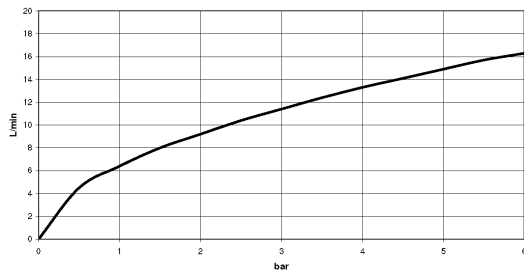




Kitchen - Tara Ultra
POT FILLER Cold water valve - polished chrome
Article number: 30 805 875-00

All dimensions in mm / inch = mm x 0,0394

Flow rate chart





Kitchen - Tara Ultra
POT FILLER Cold water valve - polished chrome
Article number: 30 805 875-00

Other surface finishes



platinum matte
30 805 875-06



platinum
30 805 875-08



Brushed Durabrass
30 805 875-28



Dark Platinum matte
30 805 875-99

More custom finish options are available via special production (xTra Service). Please see our finish matrix for availability and pricing or contact a Dornbracht representative.

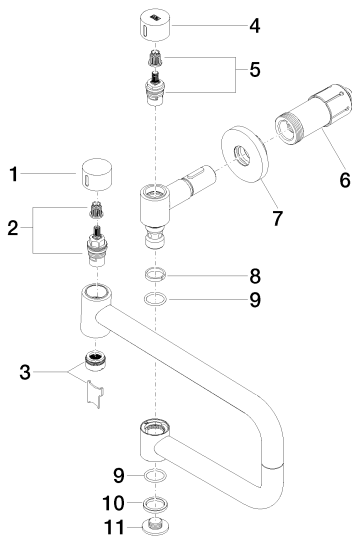
Required article



35 087 970-90 0010
POT FILLER Rough-in wall
elbow -

Kitchen - Tara Ultra
 POT FILLER Cold water valve - polished chrome
 Article number: 30 805 875-00

Spare parts list



Number	Item Number	Designation	Number of units
1	09 20 62 025-00	handle	1
2	90 90 03 146 00 90	top	1
3	90 23 01 026 11-00	aerator	1
4	09 20 62 027-00	handle	1
5	90 90 03 171 00 90	top	1
6	90 30 01 213 00 90	connection	1
7	90 27 87 039 00-00	rosette	1
8	09 28 10 136 90	ring	1
9	09 14 10 015 90	seal	2
10	09 28 10 139 90	ring	1
11	09 21 02 028-00	lid	1